



S&N Metall UG GmbH

Welcome to a brief
company presentation

Agenda

- Introduction
- Portfolio:
From project planning to project acceptance
- Cooperation: Presentation of the possibilities
 - Example Hungary
 - Example China
 - Example Serbia
- Conclusion

Introduction

- Global expertise in plant construction and mechanical engineering:
 - a) Power plants
 - b) Mining, processing and handling equipment
 - c) General steel construction
 - d) Vehicle manufacturing



Portfolio

**From project planning
to project acceptance**

Portfolio

- Planning and Consulting
 - Preliminary studies
 - Economic and feasibility studies
 - Specification of conception
 - Development
- Technical Services
- Engineering
 - Detailed and overall planning
 - Construction
 - Documentation

Portfolio

- Project Management
 - Procurement and production
 - Internal and external production (locally also)
 - Mechanical Engineering
 - Steel construction
 - Electrical equipment
 - Hydraulic systems
 - Pneumatic systems
 - Pre-assembly
 - Quality Management System
 - Acceptance procedure

Portfolio

- Shipping
 - around the world

- Construction and Assembly
 - Total completion
 - Monitoring
 - Commissioning

Cooperation

Presentation of the possibilities

Example

Hungary

Cooperation: Hungary

- The Hungarian company:
 - founded in 1989, 2 plants, 104 full-time employees
- First plant:
 - Production of tools, prototype construction
 - 1.200 m² area,
 - almost 100 chipping equipment and processing machines, including machines for electrical discharge machining, grinding machines, CNC 3D processing centers, horizontal and conventional lathes and milling machines.

Cooperation: Hungary

- Second plant:
 - 62 full-time employees
 - Production of steel structures
 - has ISO 9001 and 3834, DIN 18809, DIN 18800-7-CLASSE E with ESE certificates and certification to DIN EN15085
- Production of:
 - Undercarriages for railroad vehicles for the German railway
 - Individual, special steel structures – bridges, steel structures for stadiums, highway components and other structures made of steel
 - Series production of a bogie frame for freight wagons

Cooperation: Hungary

- The most important references:
 - 180m long, 6m wide pontoon bridge (Vienna-Danube Canal)
 - Nussdorfer bridge 55m long, 6m wide (Vienna-Danube Canal)
 - Gasworks Bridge (Vienna)
 - 120 m long suspension bridge with consoles (Lindengasse, Vienna)
 - Tunnel assembly carriage 200 tonnes, St. Gotthard Tunnel (Switzerland)
 - ÖBB bridge elements (Vienna)
 - Central station in Sofia, 3.000m², steel construction with flat roof (Sofia)

Cooperation: Hungary

- The most important references:
 - RO-RO ramp mobile 80t (Győr-Gönyű port)
 - Steel structure of the building of the Technical University (Vienna)
 - Steel components from the A22, A23 highways (Austria)
 - Reconstruction of the 1,400 t bridge, bridge Reichsbrücke (Vienna)
 - Tropical house of Zoo Leipzig (Leipzig)
 - Berlin Ostkreuz platform bridges (Berlin)
 - Bogie frame (Leipzig)
 - Heat exchanger (Norway)

Example: Hungary



Project: Pontoon bridge over the Danube (Vienna)

Example: Hungary



Project: ÖBB Bridge (St. PÖLTEN)

Example: Hungary



Project: HÖRRA Stadium (Vienna)

Example: Hungary



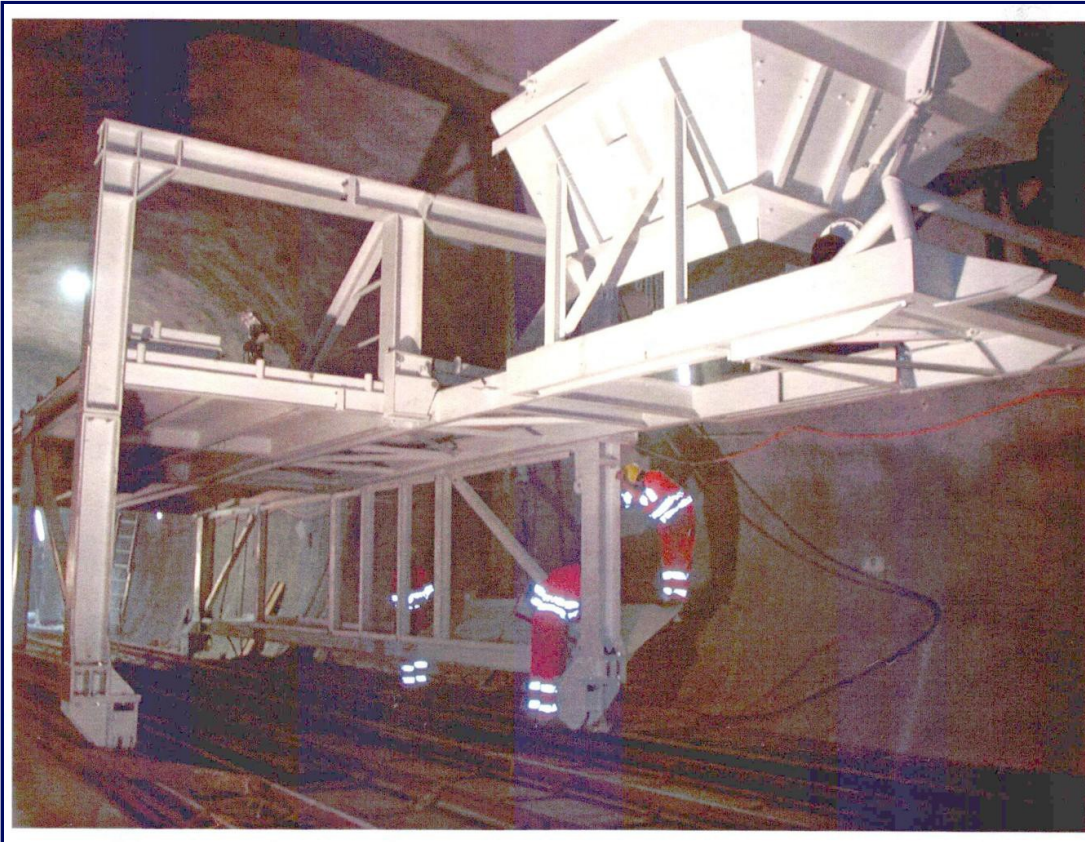
Project: Central Station with pipe supports (Sofia)

Example: Hungary



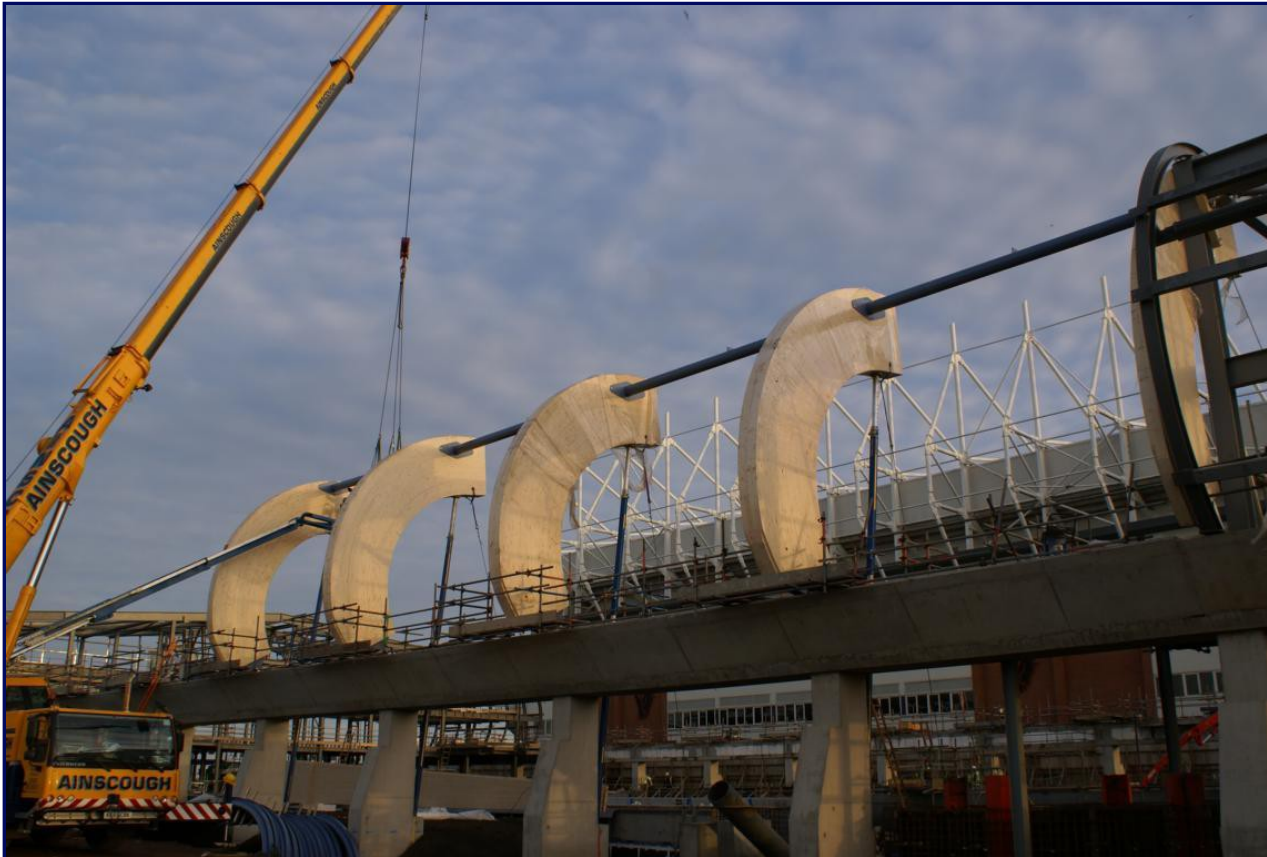
Project: Gasworks Bridge (Vienna)

Example: Hungary



**Project: Gotthard Tunnel assembly
vehicle (Switzerland)**

Example: Hungary



Indoor pool Sunderland

Example: Hungary



Berlin Ostkreuz platform bridges

Example: Hungary



Berlin Ostkreuz main carrier of the railway bridges

Example: Hungary



Tropical house of Zoo Leipzig

Example

China

Cooperation: China

- The Chinese company:
 - Founded in 1995 and reformed to an Ltd in 2001
 - Registered capital of RMB 811.42 Mil.
 - an important enterprise under CSSC (China State Shipbuilding Corporation)
 - Experience of more than 20 years

- Activities of the company:
 - Production of container vessels and dredger ships
 - Production and installation of port equipment
 - Installation and production of steel structures and parts

Cooperation: China

- International standard and classification regulars:
 - GL, LR, ABS, BV, CCS und NK
- Quality management certificates:
 - ISO 9002 Quality System Certificate
 - ISO 9001: 2000 Quality System Certificate
 - QHSAS18001 Career Health & Safety Management Certificate

Example: China



160 t Truck



400 t Fuel Tank



No. 1 Dock

Example: China



Slipway



Welding Platform



200 t Portal Crane

Example

Serbia

Cooperation: Serbia

- The Serbian company:
 - More than 920 full-time employees in the group, 340 in Serbia
- Activities of the company:
 - Fabrication of overhead traveling cranes, portal and container cranes
 - Equipment for mining, tobacco and sugar industries
 - Fabrication and erection of metal, building and other structures (gates for dams, valve gates and gate segments, ship lock-gates and steel structures, mechanical elements (open and close, lift and lower drives, valves, etc) complete mini hydro power plants etc.)

Cooperation: Serbia

- Activities of the company:
 - Production of castings (steel, grey iron and nodular castings, up to 5 tones heavy, as well as heat treatment services
 - Assembly of main and distribution pipelines systems
 - Erection of industrial halls
 - Power generating structures, services, and equipment leasing
 - Reloading, storage and continuous transportation equipment

Example: Serbia



Example: Serbia



Conclusion

Conclusion

- What can we offer?
 - Customer focus
 - Project Experience
 - Reliability
 - Competence
 - and much more...
- ...To ensure that your project is successful!

Thank you

for your attention
